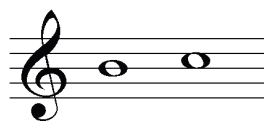


Whole Steps and Half Steps

Name the following as whole steps or half steps:

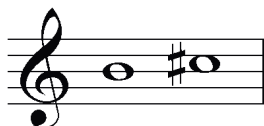


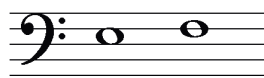


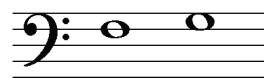












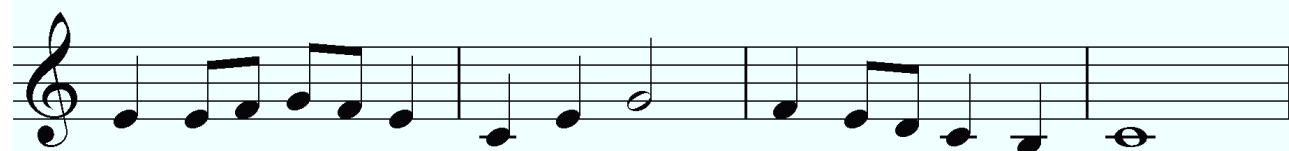
What note is a half step lower than C? _____

What note is a whole step higher than D? _____

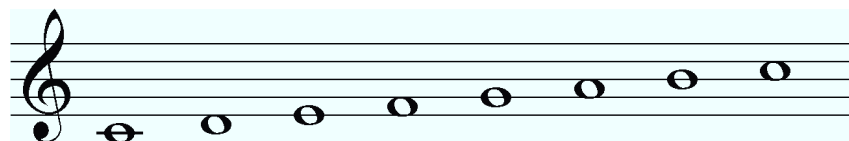
What note is a half step higher than E? _____

What note is a whole step lower than F? _____

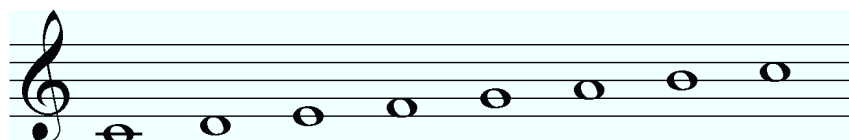
Mark the whole steps in this melody with a rectangle and mark the half steps with a circle:
(the first measure has been done for you)



Mark the **half steps** in this scale:







Mark the **whole steps** in this scale:





Dotted Notes

A dot, placed to the right hand side of a note or rest increases its value by half of itself

 = 2 Quarter Note beats  = 2 Quarter Note beats + 1 (for the dot) = 3 Quarter Note beats

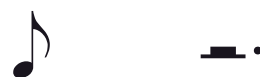
 = 4 Quarter Note beats  = 4 Quarter Note beats + 2 (for the dot) = 6 Quarter Note beats

 = 1 Quarter Note beat  = 1 Quarter Note beats + ½ (for the dot) = 1½ Quarter Note beats

Draw these notes in order from shortest to longest:



Match each note with its corresponding rest:









Complete the following "beat sums":




 +  +  = ____ Quarter Note beats

 +  +  = ____ Quarter Note beats

 +  +  = ____ Quarter Note beats

 +  +  = ____ Quarter Note beats

 +  +  = ____ Quarter Note beats

 +  -  = ____ Quarter Note beats

Slurs and Ties

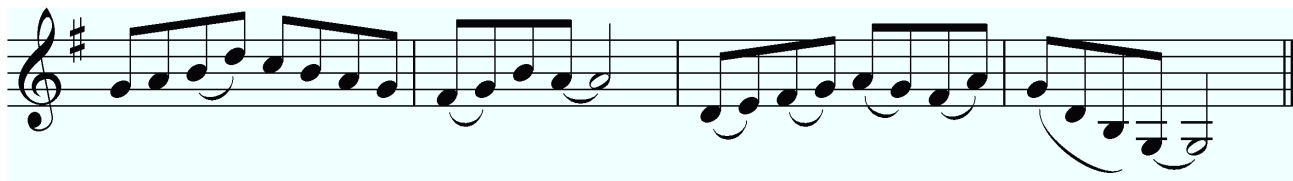
A *slur* is a curved line placed over two or more notes of different pitch, indicating they are to be played smoothly and well connected.



A *tie* is a curved line placed between two notes of the same pitch, indicating that the length of the two notes is joined together.



Circle the slurs in this melody:



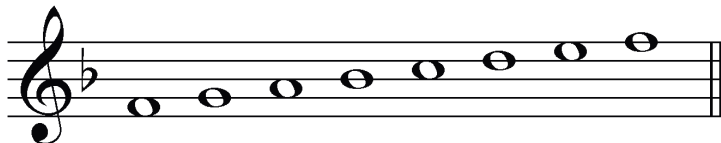
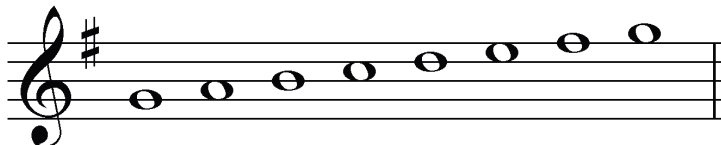
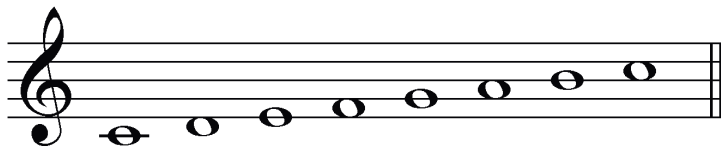
Circle the ties in this melody:



Draw two slurs and one tie in appropriate places in this melody:



Mark the Half Steps with slurs in these scales



The Scale

A **scale** is a pattern of notes that ascends or descends step by step to the same note an octave higher.



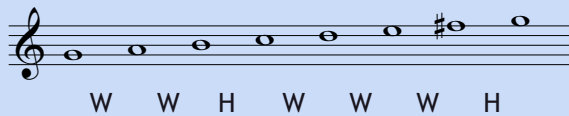
Each type of scale (major, minor etc) has a pattern of whole steps and half steps which is always the same.

The Major Scale

The **major scale** has a pattern of whole steps and half steps like this:

whole step - whole step - half step - whole step - whole step - whole step - half step
(W-W-H-W-W-W-H)

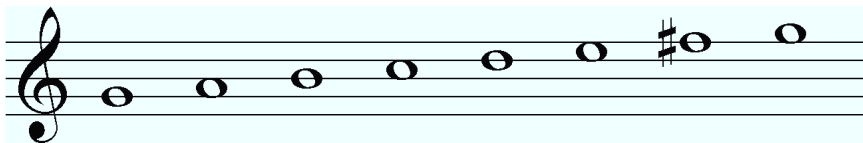
This pattern is the same, no matter what note the scale starts and ends on.



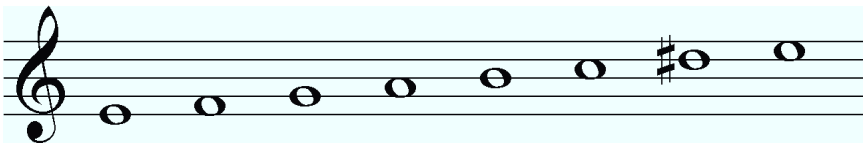
Another way to remember it is that the half steps come between the **3rd & 4th** and **7th & 8th** degrees of the scale.

Write W for whole step and H for half step under all the notes in these scales, then identify which one *isn't* a major scale:

Major Scale?



Y/N



Y/N



Y/N

The C Major Scale

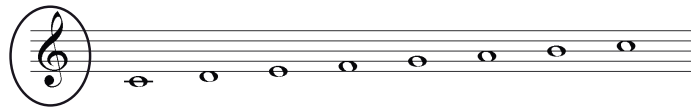
Music Notation Tip

How to write scales correctly

Spread the notes out over the space - start with the first and last notes, so that you don't end up with all the notes bunched up:




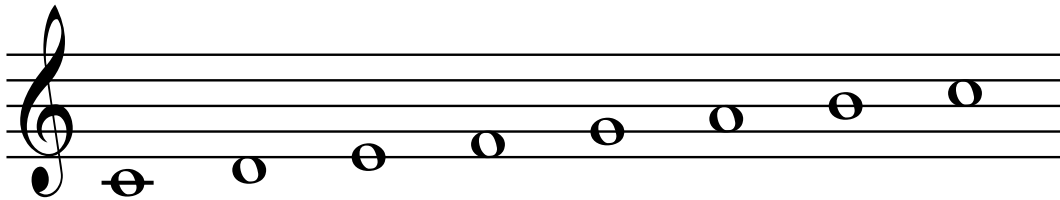
Always remember to write the clef:



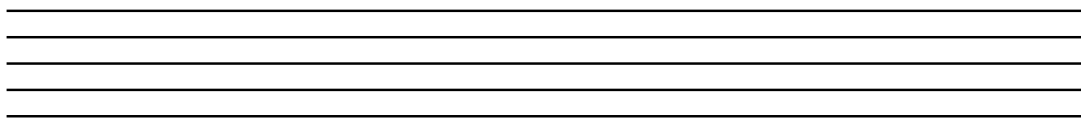
and finish with a double barline:



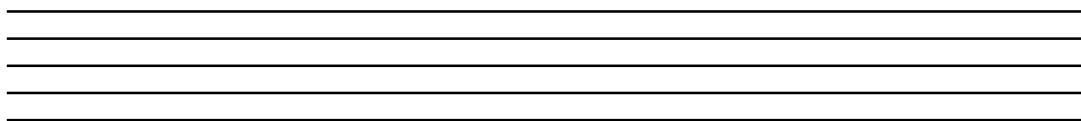
Mark the half steps in this scale of C major with a bracket like this: 



Write the scale of C major in the treble clef:

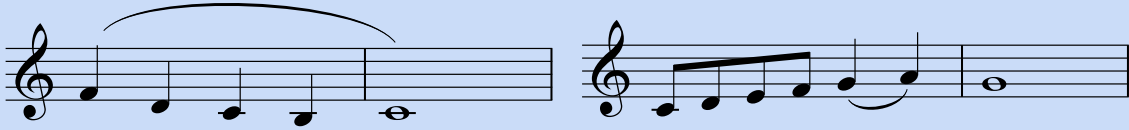


Write the scale of C major in the bass clef:



Legato and Staccato

Legato means smoothly, well connected, and most notes are usually assumed to be played legato unless instructed otherwise. Sometimes legato is indicated with a slur placed over the phrase or between individual notes.



Staccato means detached and short, and it is indicated with a dot placed on top or underneath the head of the note.



Allegro 2 3 4

mp

5 6 7 8

p *crescendo* *ritardando* *f*

9 10 11 12

mp
A Tempo

13 14 15 16

Add indications in measure 4 that all notes are to be played short and detached

What does the word above measure one mean? _____

What does the word below measure seven mean? _____

What do the words "a tempo" below measure nine mean? _____

The notes in measure 5 are said to be on what sort of lines? _____

What is the symbol below the note in measure 8, and what does it mean? _____

Should the notes in 14 be played legato or staccato? _____

In 15 how many notes should be played staccato? _____ and how many legato? _____

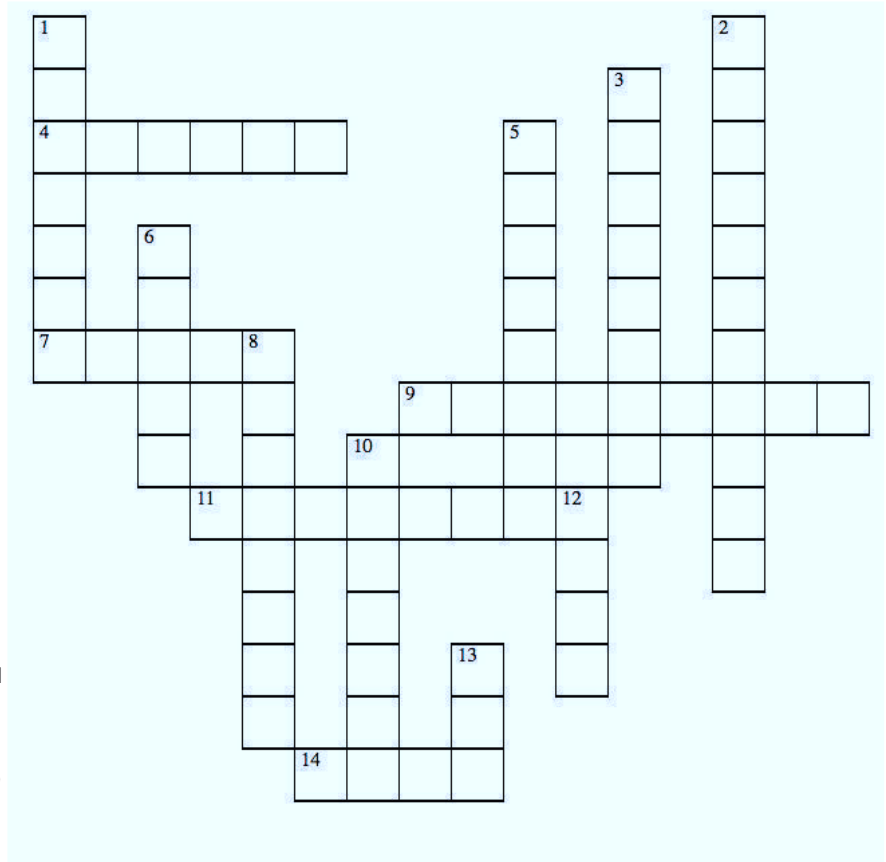
Lesson 8: Crossword

ACROSS

- 4 _____ lines are used for notes above or below the staff or stave
 7 _____ staff is used by piano players
 9 Another name for a Tone
 11 Music is divided by these
 14 Another name for Whole Step

DOWN

- 1 'Andante' means 'At an easy _____ pace'
 2 Sharps or flats placed anywhere in a piece of music
 3 Another name for Semitone
 5 Another name for Half Step
 6 A symbol to raise a note by one semitone
 8 Indications of how loud music is played
 10 Italian term meaning lively and fast
 12 A curved line placed over different pitched notes to indicate that notes are played smoothly together
 13 A curved line which joins the length of two notes together



Lesson 9: Find-A-Word

Violin	T	U	B	A	Z	F	X	I	P	B	P	M	I	C	D	R	V
Viola	D	R	I	D	J	T	Y	N	P	S	O	Z	Z	G	T	X	I
Cello	R	F	B	N	W	L	L	G	P	T	B	P	K	T	R	Q	O
DoubleBass	O	W	G	Y	A	P	M	F	D	E	O	F	X	T	U	Q	L
Trumpet	H	R	Q	E	W	P	L	L	A	N	E	U	O	H	M	M	A
Trombone	C	N	X	D	L	F	M	R	D	A	T	F	P	G	P	N	T
Horn	I	D	O	O	O	S	M	I	K	T	E	I	I	L	E	J	C
Tuba	S	I	L	U	E	I	E	V	T	S	N	Z	C	O	T	W	K
Harpsichord	P	C	A	B	N	A	B	Q	D	A	I	P	C	C	D	M	U
Dulcimer	R	Y	S	L	O	L	I	A	U	C	R	V	O	K	W	U	T
Clarinet	A	M	Q	E	B	G	J	C	L	N	A	T	L	E	M	A	K
Oboe	H	B	U	B	M	N	O	J	C	T	L	C	O	N	V	B	W
CorAnglais	D	A	D	A	O	A	L	N	I	R	C	E	O	S	A	M	C
Piccolo	F	L	L	S	R	R	Q	S	M	B	G	L	Z	P	A	I	D
Marimba	V	S	D	S	T	O	R	R	E	K	S	L	R	I	V	R	P
Glockenspiel	B	M	H	R	D	C	M	B	R	I	C	O	Y	E	P	A	J
Castanets	H	O	R	N	H	O	U	N	I	L	O	I	V	L	I	M	H
Timpani																	
Cymbals																	

Key Signatures

A **key signature** has one or more flats or sharps placed to the right of the clef to let us know what key the piece is in. It means that those notes are played as sharps or flats.

For example:

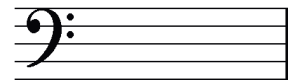
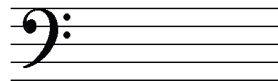
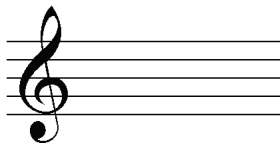
means that all Fs are played as F sharps in this piece.

means that all Bs are played as B flats in this piece.

One sharp is used for the key of **G major**



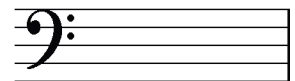
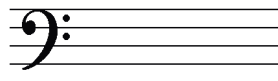
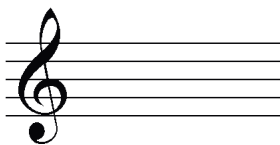
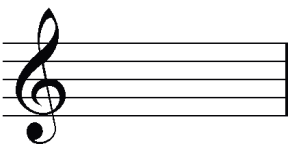
Practise drawing the key signature of G major in the treble and bass:



One flat is used for the key of **F major**



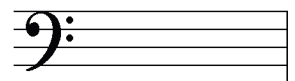
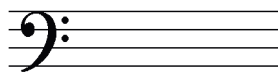
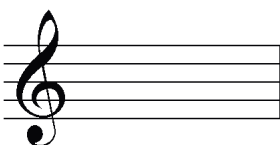
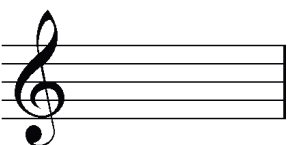
Practise drawing the key signature of F major in the treble and bass:



Two sharps are used for the key of **D Major**

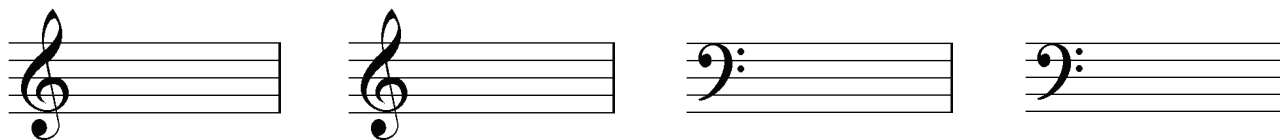


Draw the key signature of D major in the treble and bass:

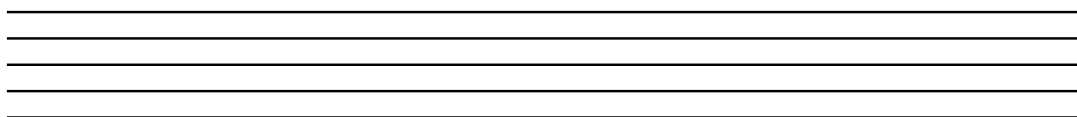


The G Major Scale

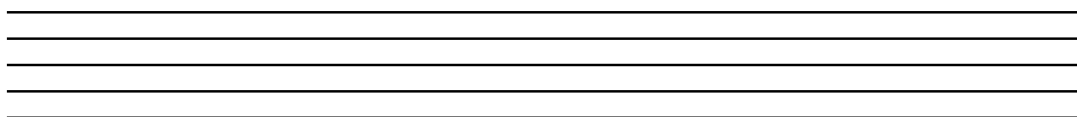
Draw the key signature of G major in the treble and bass:



Write the scale of G major in the treble clef then mark the half steps with a bracket like \lceil \rfloor :



Write the scale of G major in the bass clef then mark the half steps:



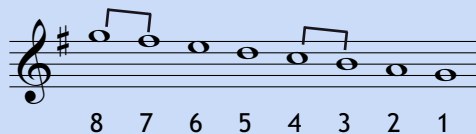
Ascending or Descending Scales

Scales can be written ascending or descending. The half steps are still between the 3rd and 4th and 7th and 8th degrees, counting from the bottom

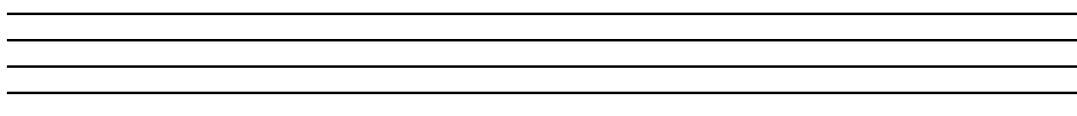
G major scale ascending



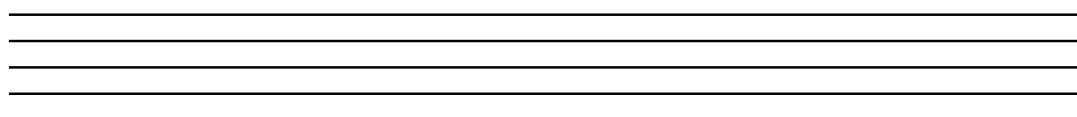
G major scale descending



Write the scale of G major in the treble clef, one octave descending, then mark the half steps:

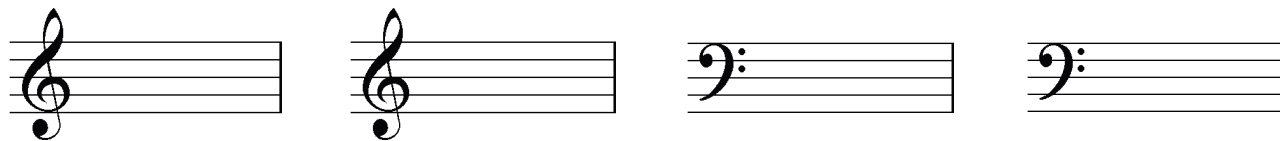


Write the scale of G major in the bass clef, one octave descending, then mark the half steps:

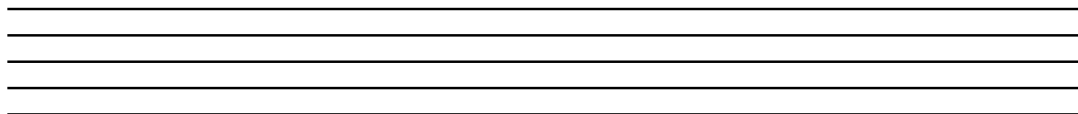


The F Major Scale

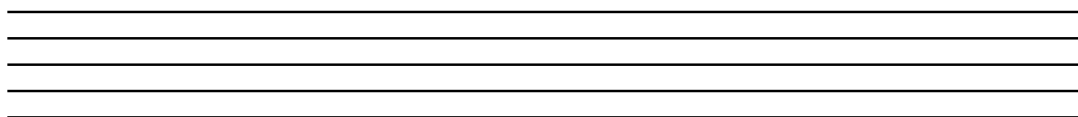
Draw the key signature of F major in the treble and bass:



Write the scale of F major in the treble clef, one octave ascending, then mark the half steps:



Write the scale of F major in the bass clef, one octave descending, then mark the half steps:



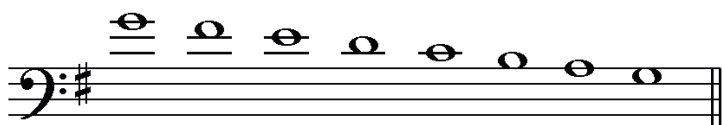
Identifying Major Scales

Identify these major scales:









Completing Measures with Rests

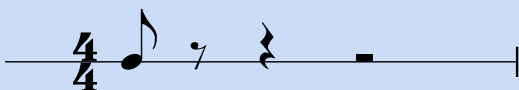
When asked to complete measures with rests it is important to show where the beats are

Therefore always remember:

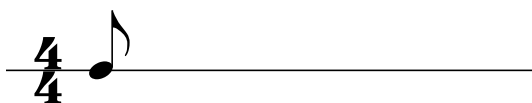
complete one beat before moving onto the next



First you would complete the first beat with a eighth rest, then finish it with a quarter rest and a half rest.

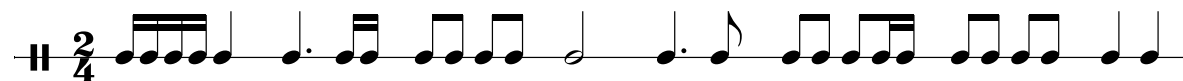
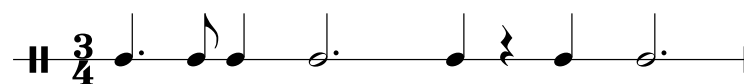
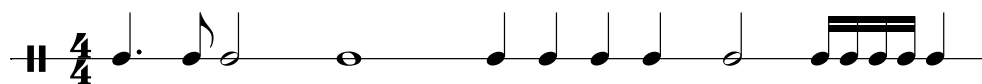


Complete these measures with rests:



Adding Barlines

Add barlines to these rhythms:



Reproducible if current license for this product is owned at funmusicco.com

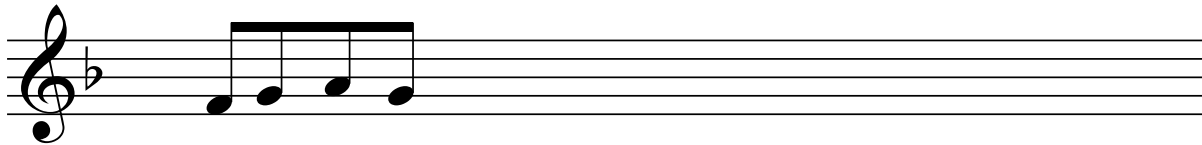
Ostinato

An ostinato is a repeated pattern of notes.



It can be any length, and can be for any instrument. Sometimes it is used in the bass, and sometimes as a device in melody writing

Copy out this pattern 2-3 times to make an ostinato.
Add an appropriate time signature and barlines.



What key is the piece in? _____

What time signature is the piece in? _____

Mark an ostinato with a bracket. How many times is it played in this piece? _____

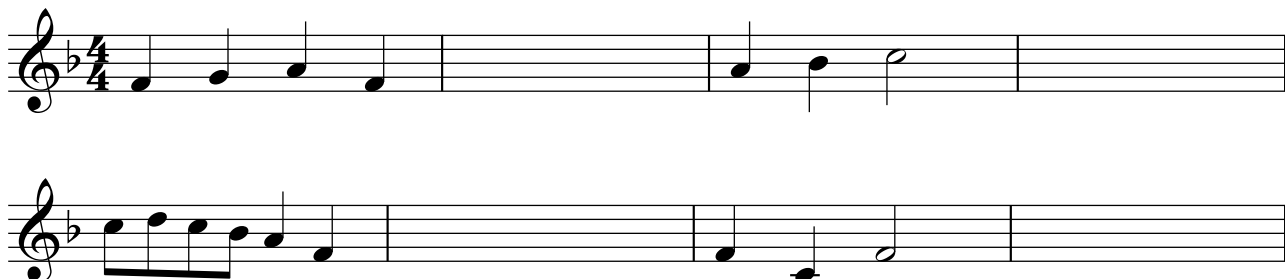
What is the interval between the two notes with a * in measure 7 _____

What does the term "andante" mean? _____

How loudly should the opening of the piece be played? _____

Is the distance between the last two notes a Whole step or a Half Step? _____

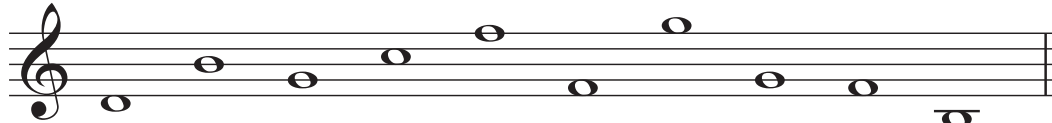
Copy out each measure of this piece to complete this well known folk song:



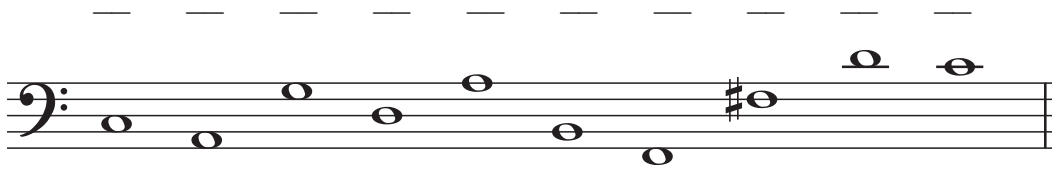
Level 1 Theory Assessment #1

Name: _____

Name these notes:



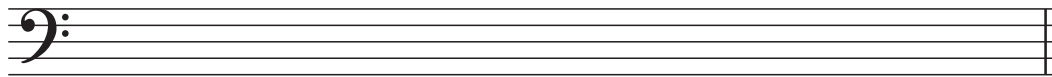
/20



/20

Write these notes:

G A D C F F# B Bb E



/10

C A D E G G# B Ab F

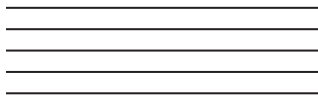


/10

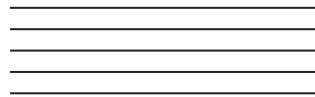
What is the name for the small lines notes above or below the staff are placed on?

/5

Draw a treble clef on this staff:



Draw a bass clef on this staff:



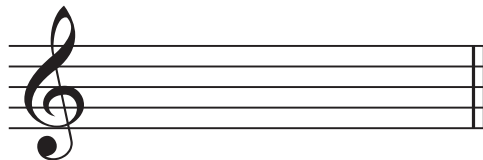
/5

/5

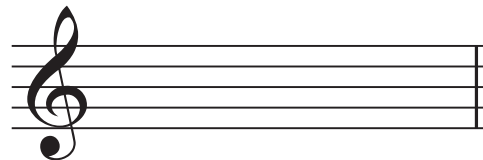
What is the correct term for the two staff music that is used for the piano?

/5

Draw a sharp on the top line of this treble staff:



Draw a flat on the middle line of this treble staff:



/5

/5

What does a sharp do to a note?

/5

What does a flat do to a note?

/5

Total Marks
/100